



## Murals and Memorials

This booklet is a guide to a walk along Princes Avenue, Liverpool 8, from the Rialto at the gateway to L8 to the Mandela Memorial on the Princes Park's lake island. It provides QR links to various pieces of video, audio and text articles that illustrate the history, heritage and culture of the area, with special emphasis on the experience of its Black community.

Some of the videos and podcasts in the QR code links run for some time, so if you are doing the actual walk, these may be best bookmarked for later viewing, listening, reading.

Mandela8 is grateful for the support given to this initiative by Culture Liverpool, Liverpool City Region Combined Authority, The Shared Prosperity Fund UK and thanks to the many contributing individuals and organisations. These include; Laurence Westgaph, Bea Freeman, Yaw Owusu, Dave McTague, Rich Pontefract, Elliss Eyo-Thompson, Africa Oyé, Granby 4 Streets CLC, Friends of Princes Park, National Museums Liverpool, Writing on the Wall, Mellowtone, On Record and Culture Liverpool.



Liverpool  
City Council



Funded by  
UK Government



LIVERPOOL  
CITY REGION  
COMBINED AUTHORITY

METROMAYOR  
LIVERPOOL CITY REGION



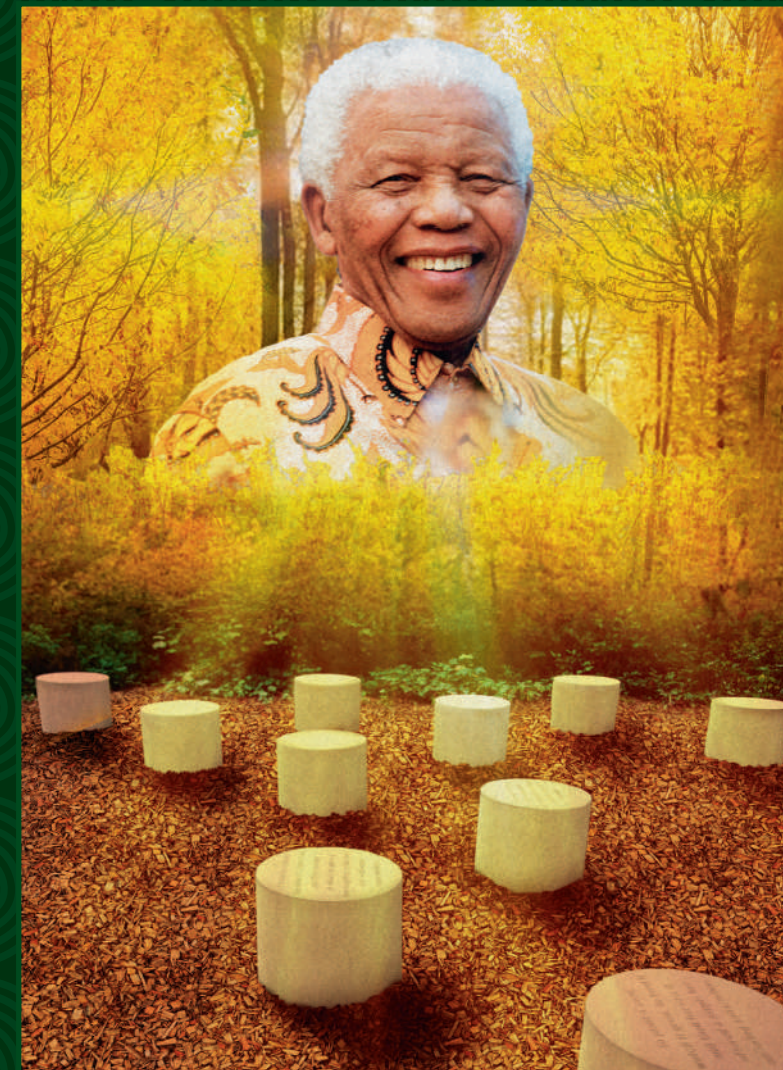
HOUSE OF MANDELA

a plastic design

WAYWARD

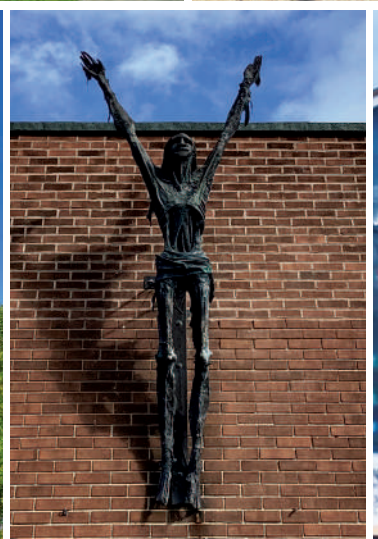
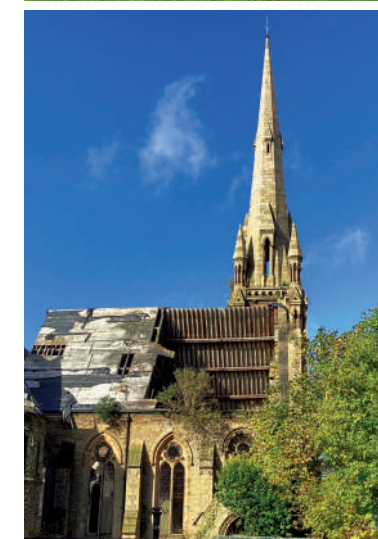
Mandela8

A WALK ALONG THE AVENUE

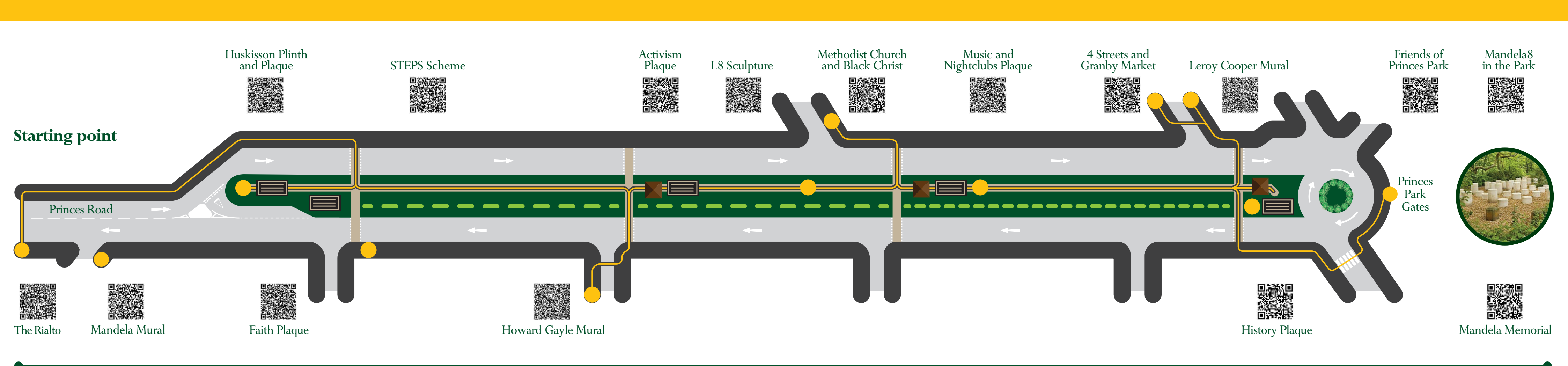


# Mandela8

## A WALK ALONG THE AVENUE







## A Walk Along The Avenue

- **The Rialto:** The gateway to L8. One of the hotspots of the 1981 uprising, also known as the Toxteth Riots.
- **The Mandela Mural:** Painted by Jon Culshaw on the Kuumba Imani Millennium Centre, a legacy of Liverpool Black Sisters.
- **The Huskisson Plinth:** Here stood the statue of William Huskisson, which was removed by activists in the early 1980s.
- **Central Boulevard walkway:** Recently redesigned for a Steps scheme.

- **The Welsh Presbyterian Church:** The churches on the route reflect the many faiths of the communities of L8.
- **The Howard Gayle Mural:** Liverpool Football Club's first Black player and noted activist.
- **The Methodist Church:** Its Youth Club played a major role in raising Black consciousness and activism during the 70s and 80s.
- **The L8 Garden Sculpture:** The sculpture symbolises the journeys of the people of L8
- **Black Christ Sculpture:** Designed by Arthur Dooley.

- **Granby Street:** The epicentre of L8's Black community until the late 1990s. The monthly market attracts thousands.
- **The Leroy Cooper Mural:** On the gable of Granby Street School, the mural celebrates the noted L8 artist and activist.
- **The Sunburst Gates to Princes Park:** designed by Joseph Paxton.
- **The Nelson Mandela Memorial:** Access Princes Park's lake island by using the 'Freedom Bridge', designs by Wayward.
- The various Heritage Plaques along the route were installed after community heritage consultations, as part of the STEPS renewal scheme.

**Please note:**  
Princes Avenue can be very busy with traffic at times, please have a safe walk and use the crossings indicated on the map. Thank you, from all at Mandela8.

**Bus Routes to The Rialto:** 86, 80 and 75.

**Mandela8**  
visit: [mandela8.org.uk](https://mandela8.org.uk)

- Locations
- Mandela8 Walk
- ▮ Heritage Plaques
- Cycle Path
- Boulevarde Path